

Domestic violence is a pattern of abuse used to gain power and control. Abuse takes many forms, including:

- emotional
- verbal
- physical
- financial
- sexual
- spiritual/religious
- digital/technological

Domestic violence and human trafficking impact individuals of all genders, backgrounds, races, ages, and abilities.

You are not alone.

Learn more at
mspny.org/am-i-being-abused

There are many ways to connect with us for support and resources.



24/7 Hotline:
800-298-SAFE (7233)

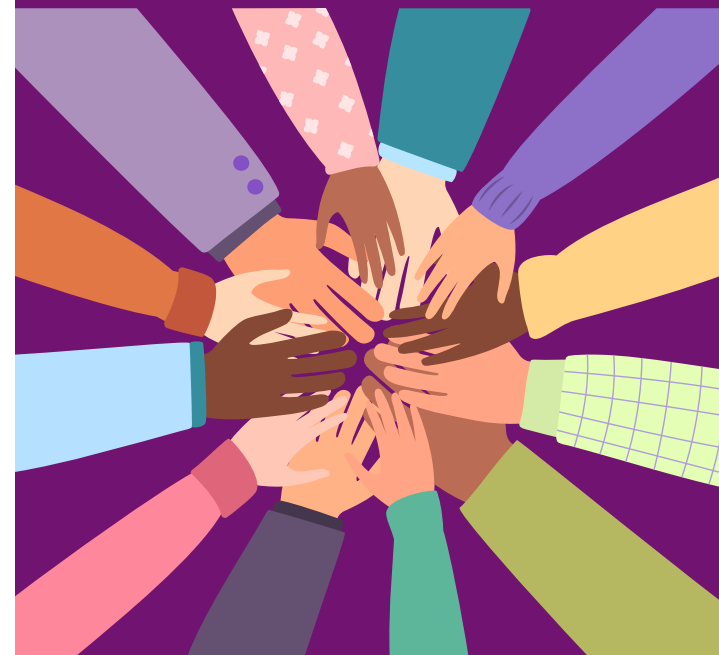
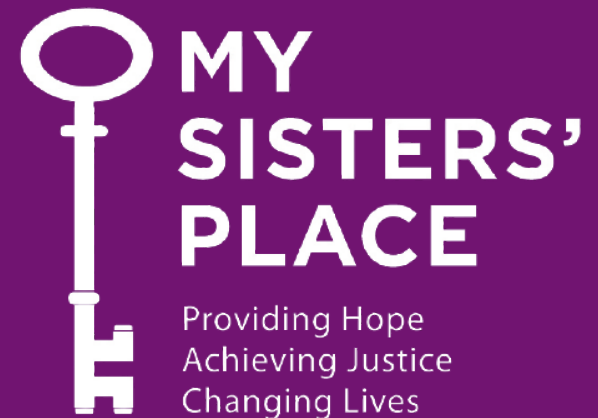
Chat Line:
resourceconnect.com/yourlavender/chat

Text:
914-600-4208

Website:
mspny.org

Follow us!

-  @mysistersplaceny
-  @mysistersplaceny
-  @mspny
-  My Sisters' Place NY



We can help:

- Counseling & Advocacy for Adults and Children
- Emergency Shelter
- Specialized Children's Programs
- Legal Advice in Family & Immigration Law
- Human Trafficking Case Management & Support

Call our confidential
24-hour hotline at
800-298-SAFE (7233)

MSP's multi-lingual services are free, confidential, and available regardless of citizenship status.

My Sisters' Place is working to create a world in which every individual has the basic human right to be free from gender-based violence and to engage in relationships that embrace the principles of respect, equality, and safety.



We are committed to providing services with a client-centered, trauma-informed, and anti-oppression approach.

Learn about MSP's Guiding Principles at mspny.org/mission-&-guiding-principles

We also offer:

- Trainings and technical assistance for service providers, government agencies, community groups, educators, and faith-based organizations
- Healthy Relationships workshops for youth to explore the dynamics of dating violence and options to safely address abuse

We believe that educating students, professionals, and partners is necessary to strengthen the systemic response to survivors, preventing further violence in our communities.
